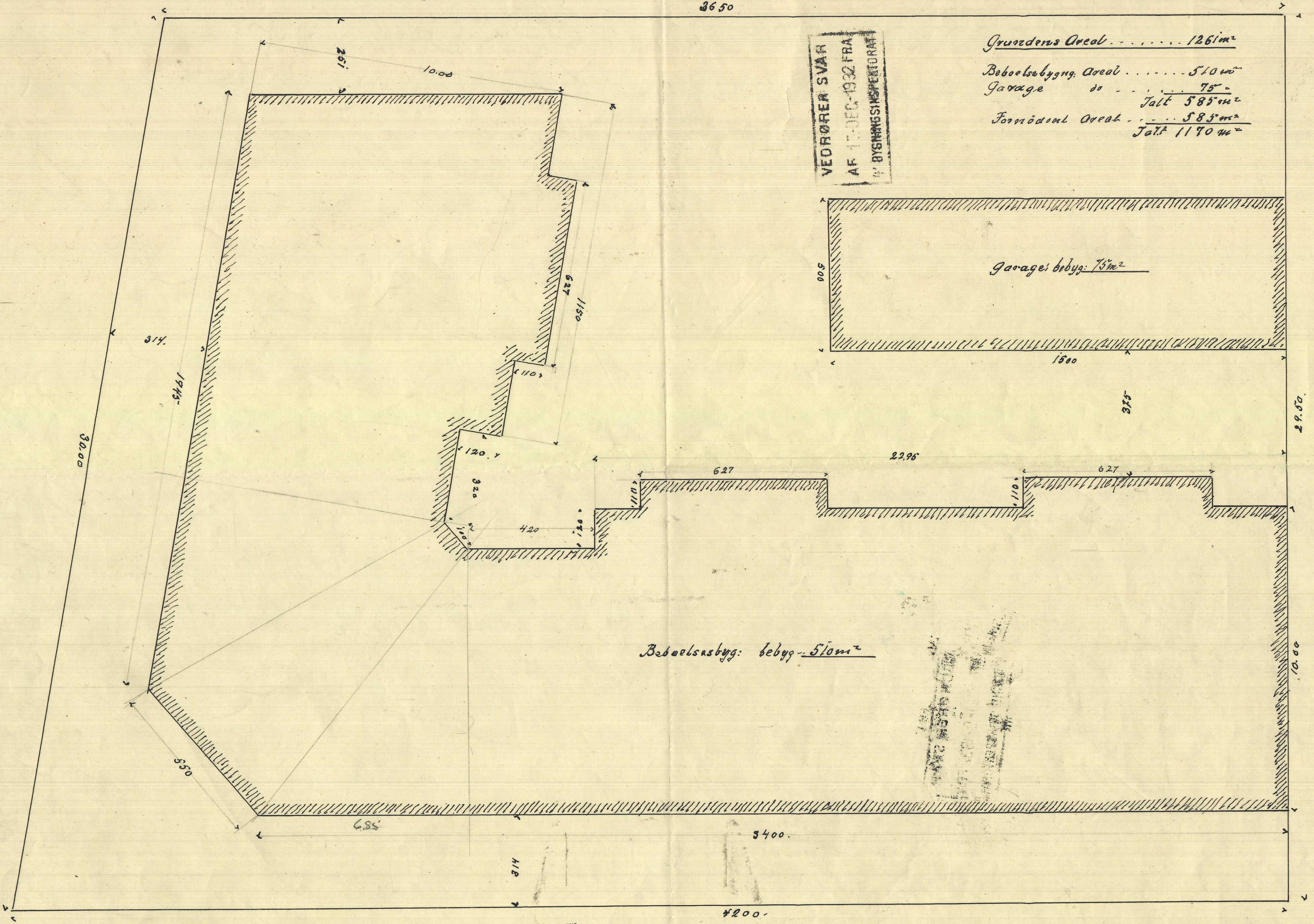


2650



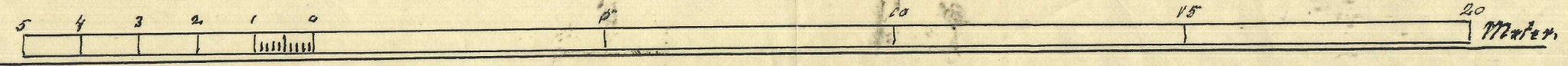
VEDRØRE SVAR
AF 15. DEC. 1932 FRA
BYGNINGSINSPEKTORAT

Grundens Areal 1261 m²
 Beboelsesbygning Areal 510 m²
 Garage " " 75 m²
 Talt 585 m²
 Forvoldent Areal 585 m²
 Talt 1170 m²

Garagebebyggelse 75 m²

Beboelsesbygning bebyggelse 510 m²

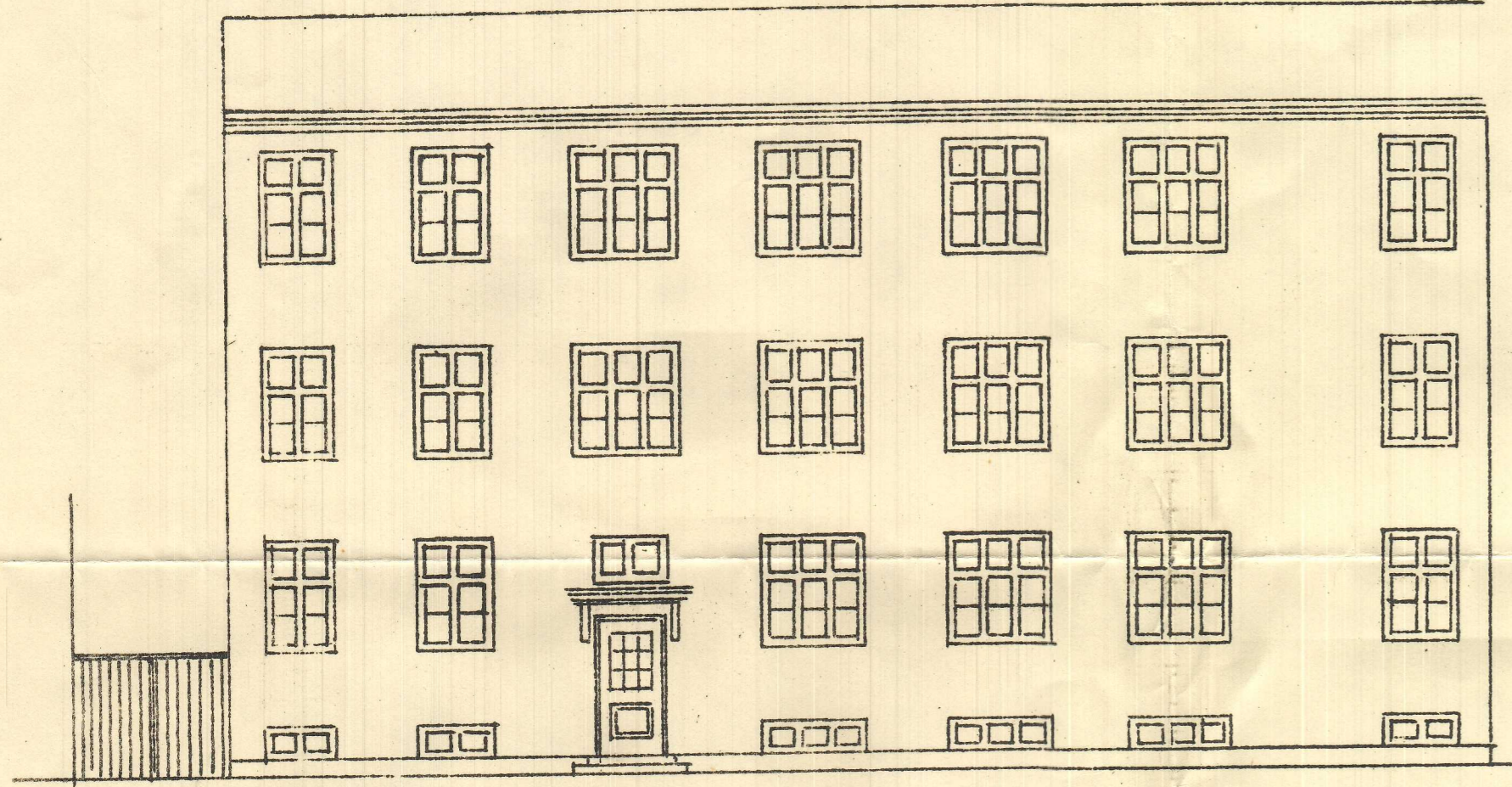
Floras alle



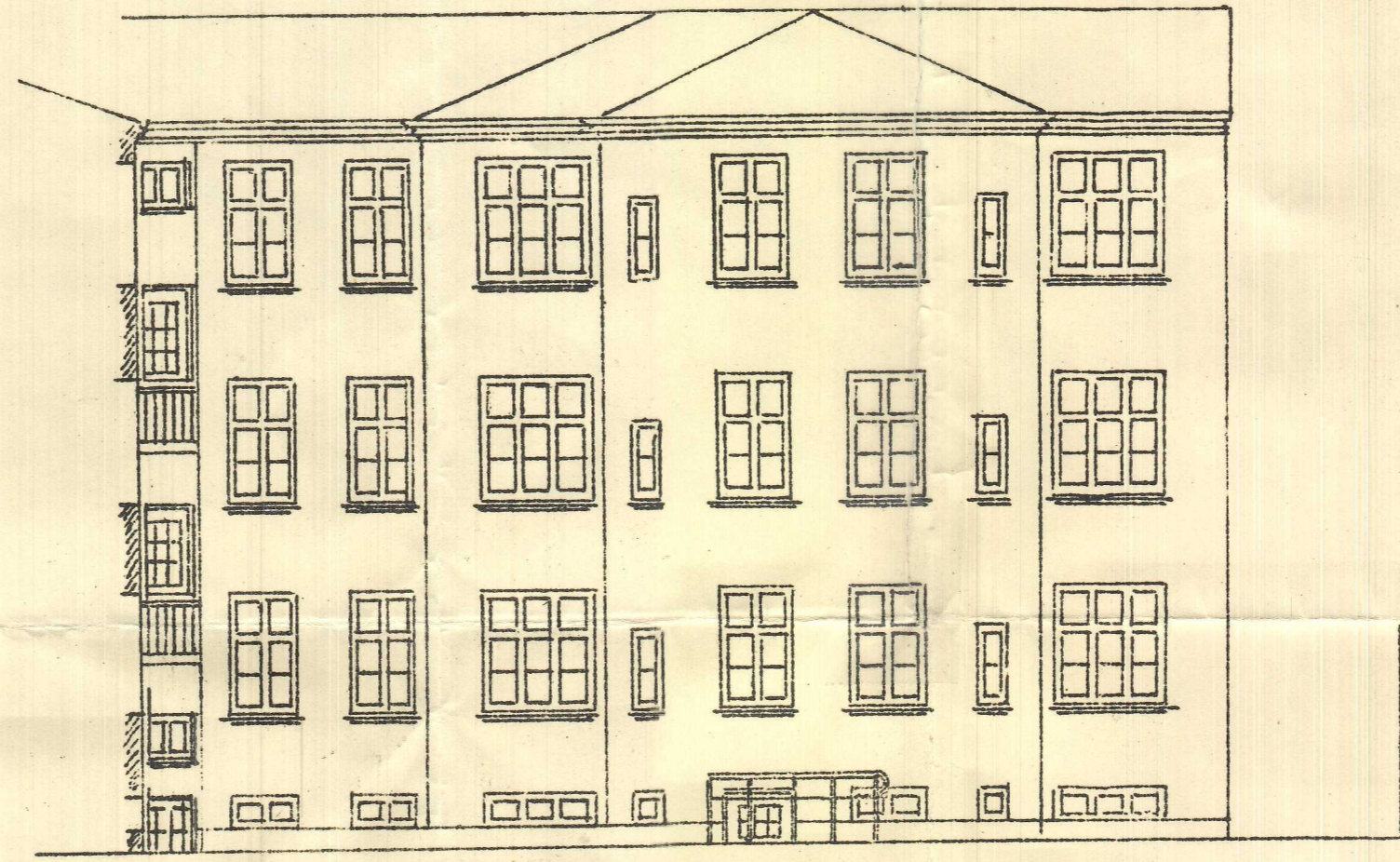
Nibe Hansen Maaht. 1932
 Bygningsinspektør

Matr. No 8409 by Vanløse.

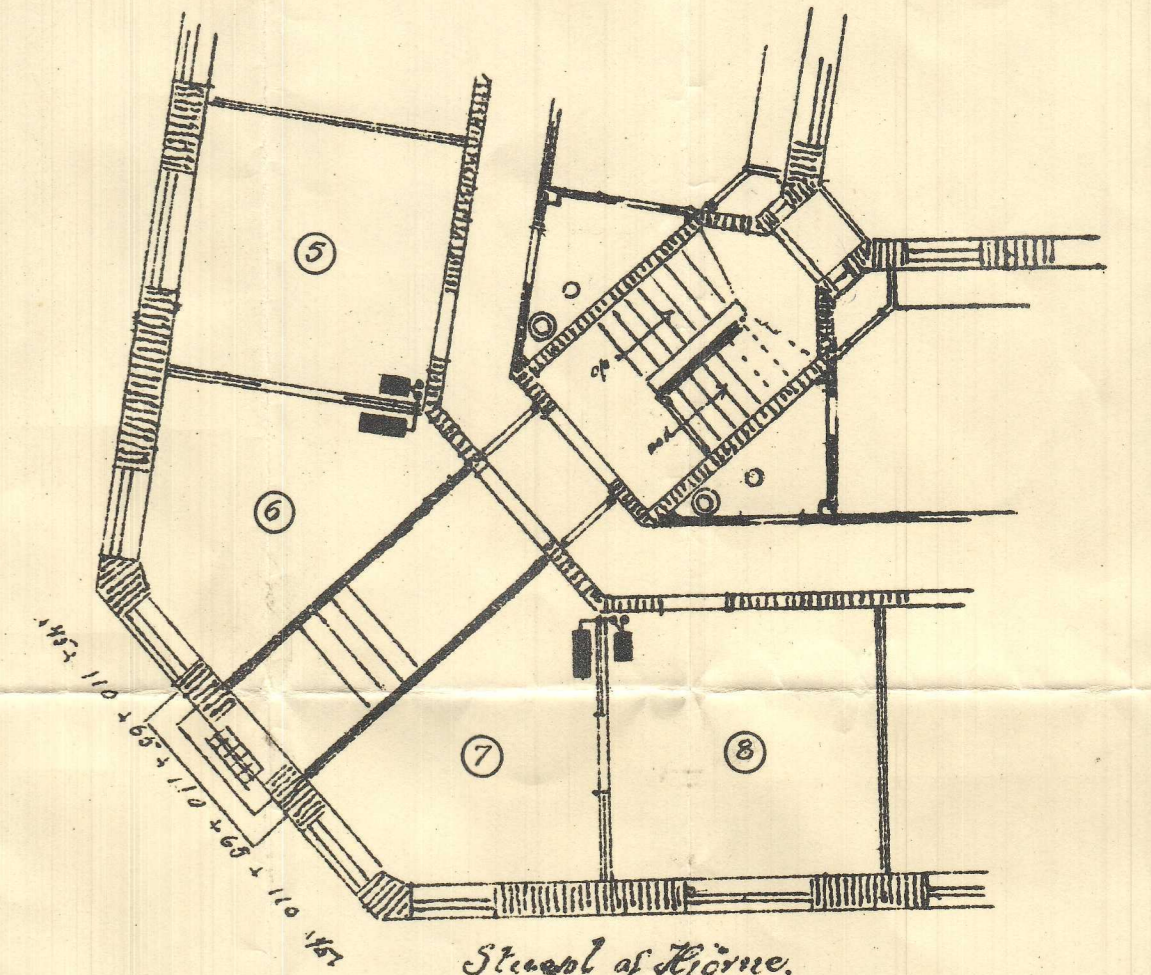
A.T.



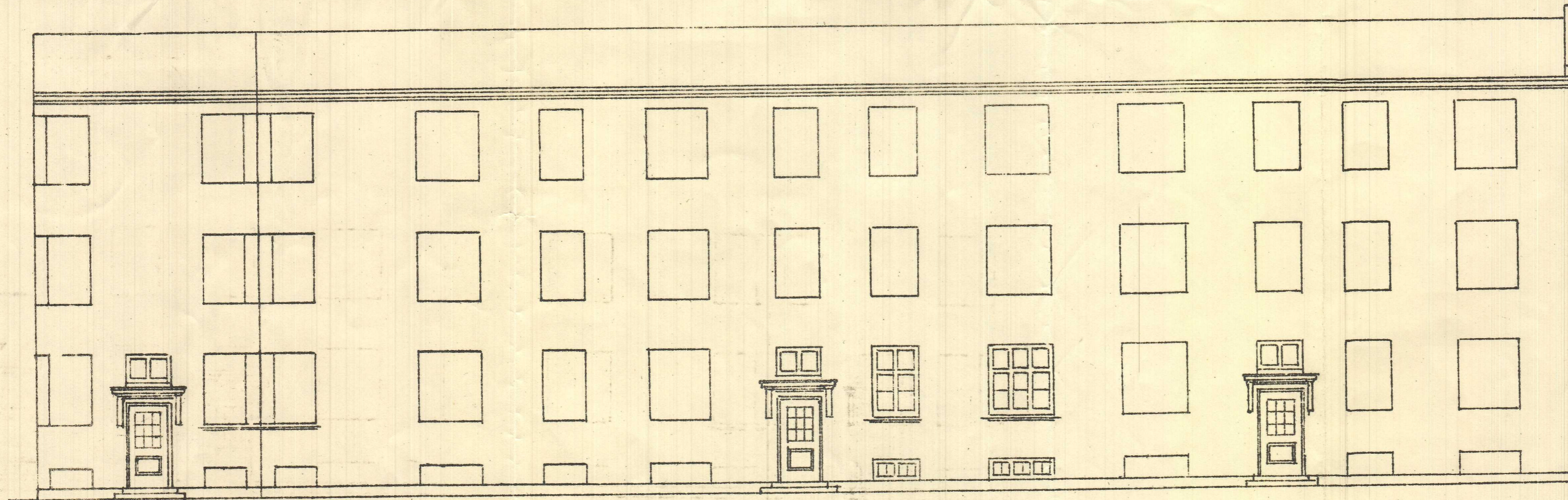
Facade Skjulshøjs-Allé.



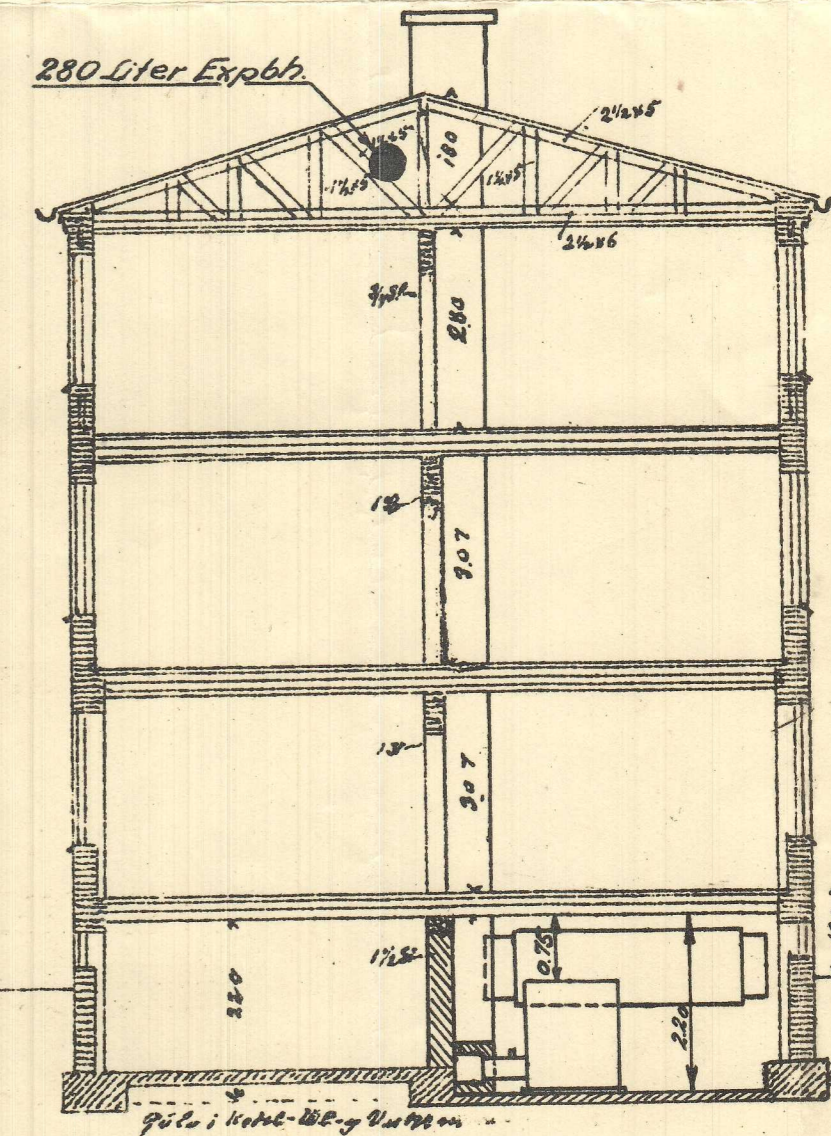
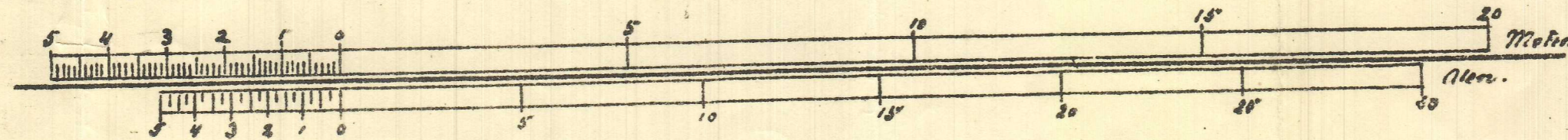
Gaardfacade (Skjulshøjs Alle)



Stempel af Hjørne.



Facade m. Florasalle.



København Skovvej 1932

L. H. Hansen
arkitekt m. f. l. h.

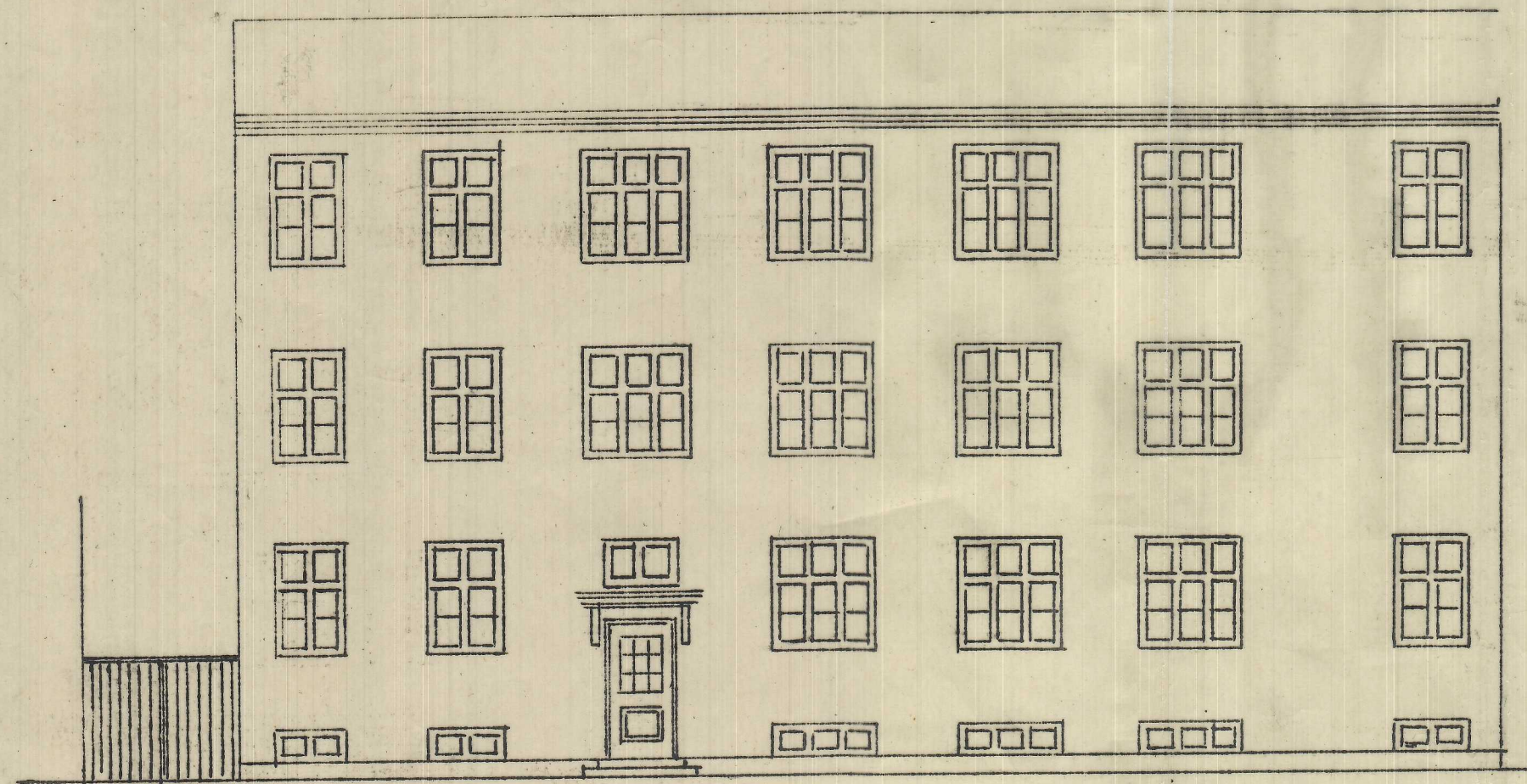
MED SVAR AF
15-SEPTEMBER
4^{DE} BYGNINGEN OG GRAT

København Mai 1933
9/3 Aurora
John M. Persen

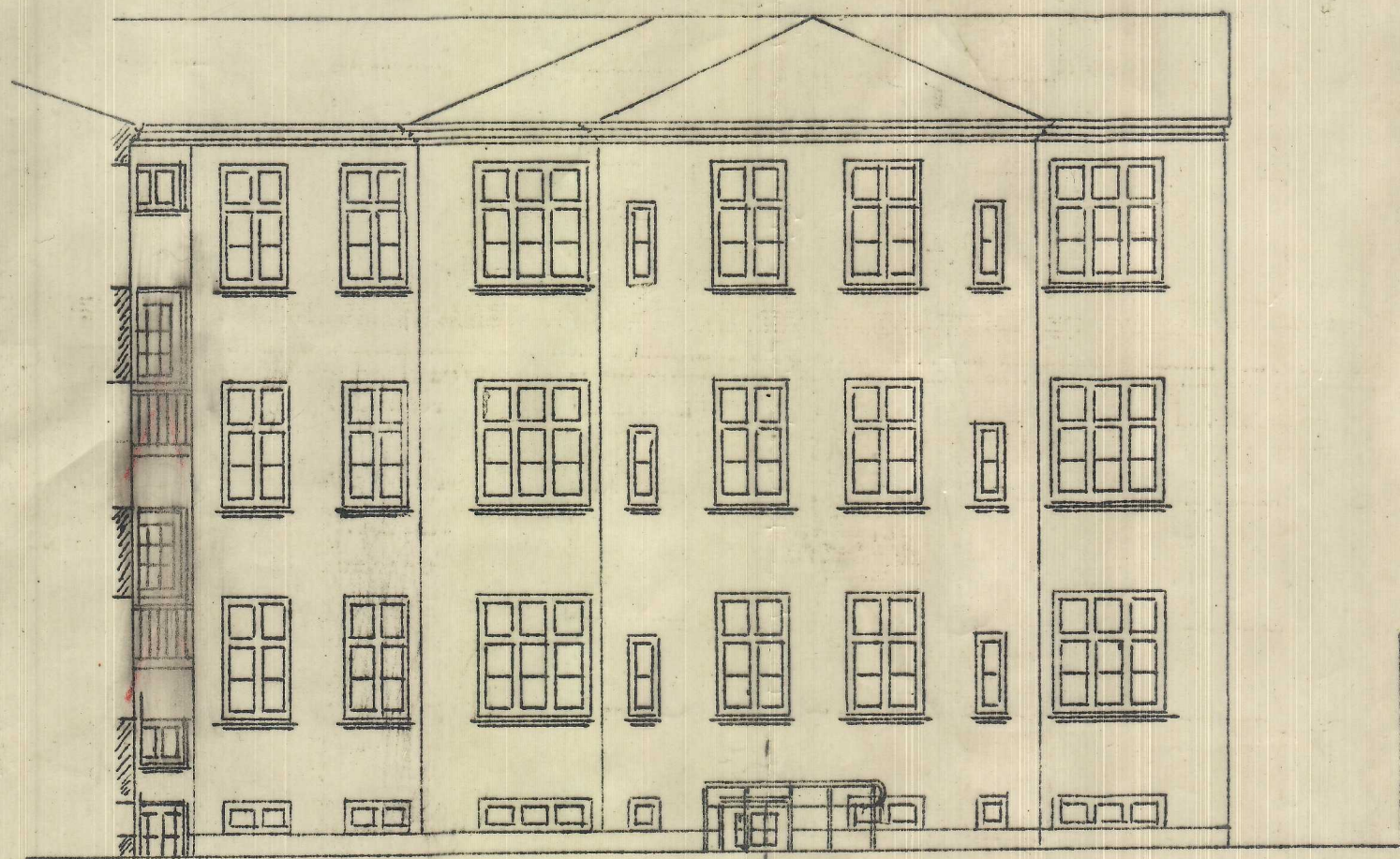
Bilag Jr. VL 234 * - 1 SEP. 1933

Matr. No 8 af 09 by Vanløse.

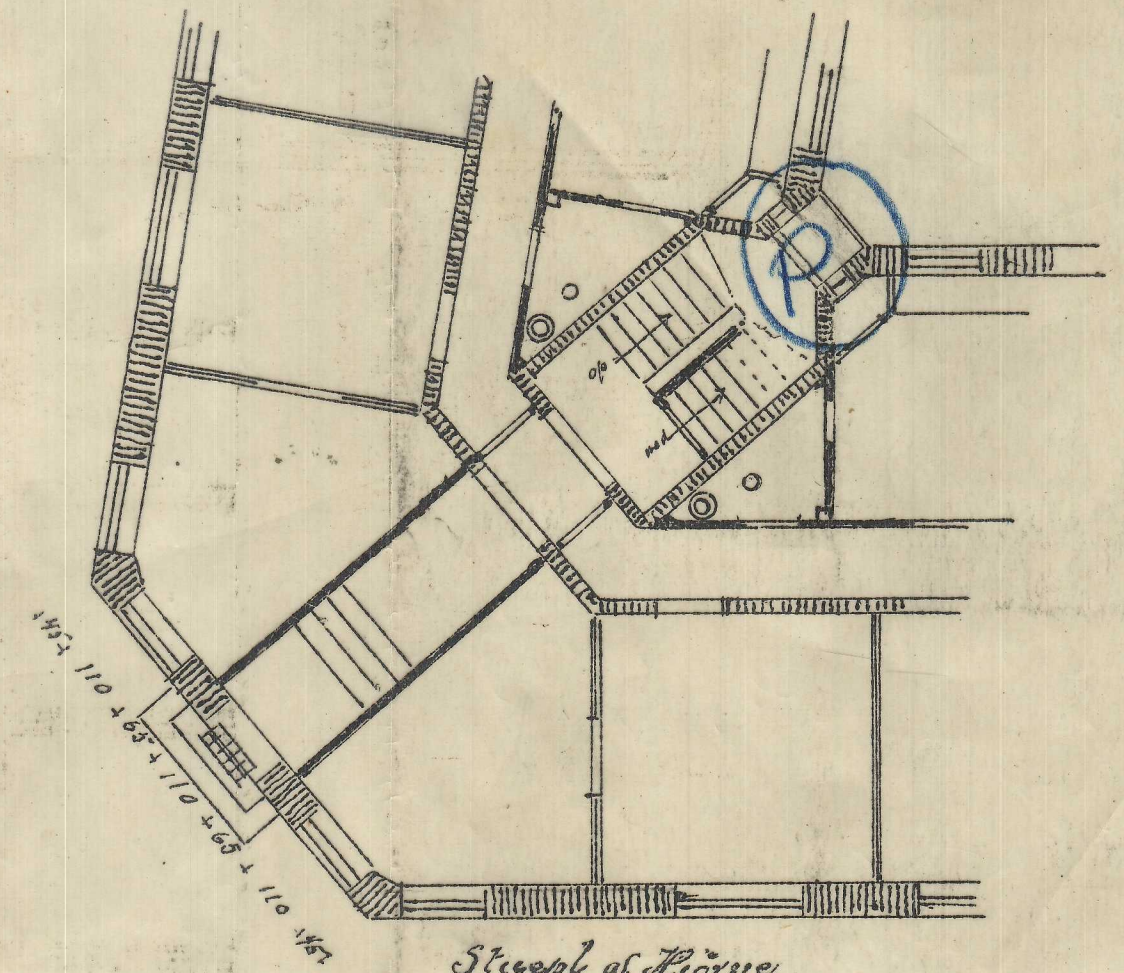
K 8 bf VL



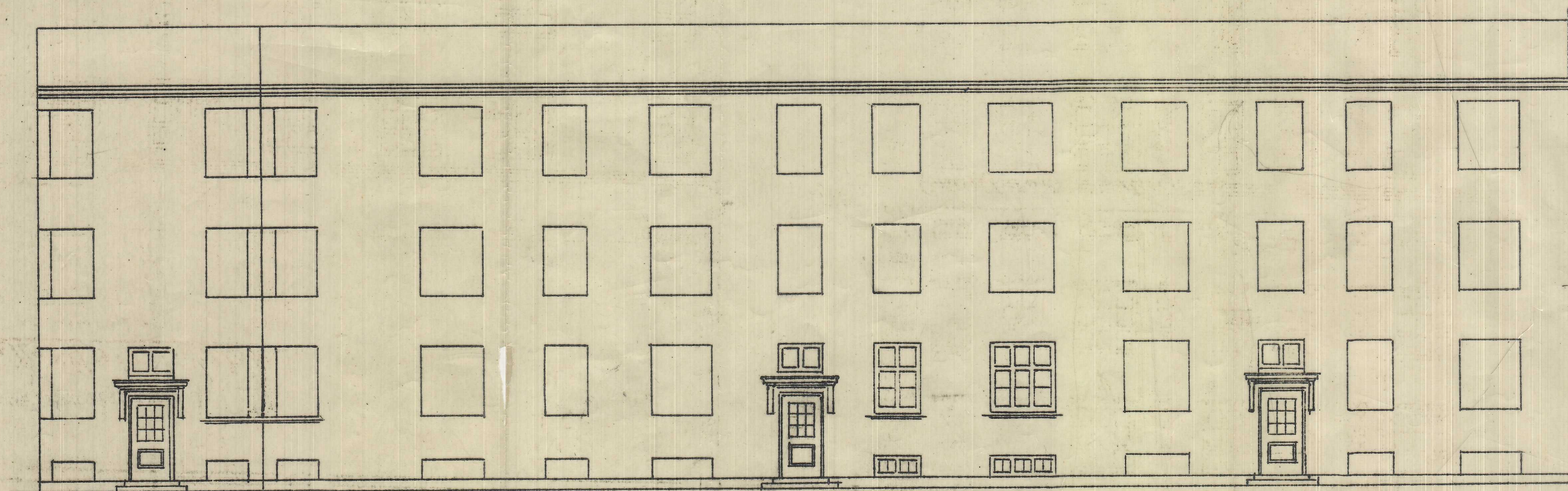
Facade Skjulshøjs-Allé.



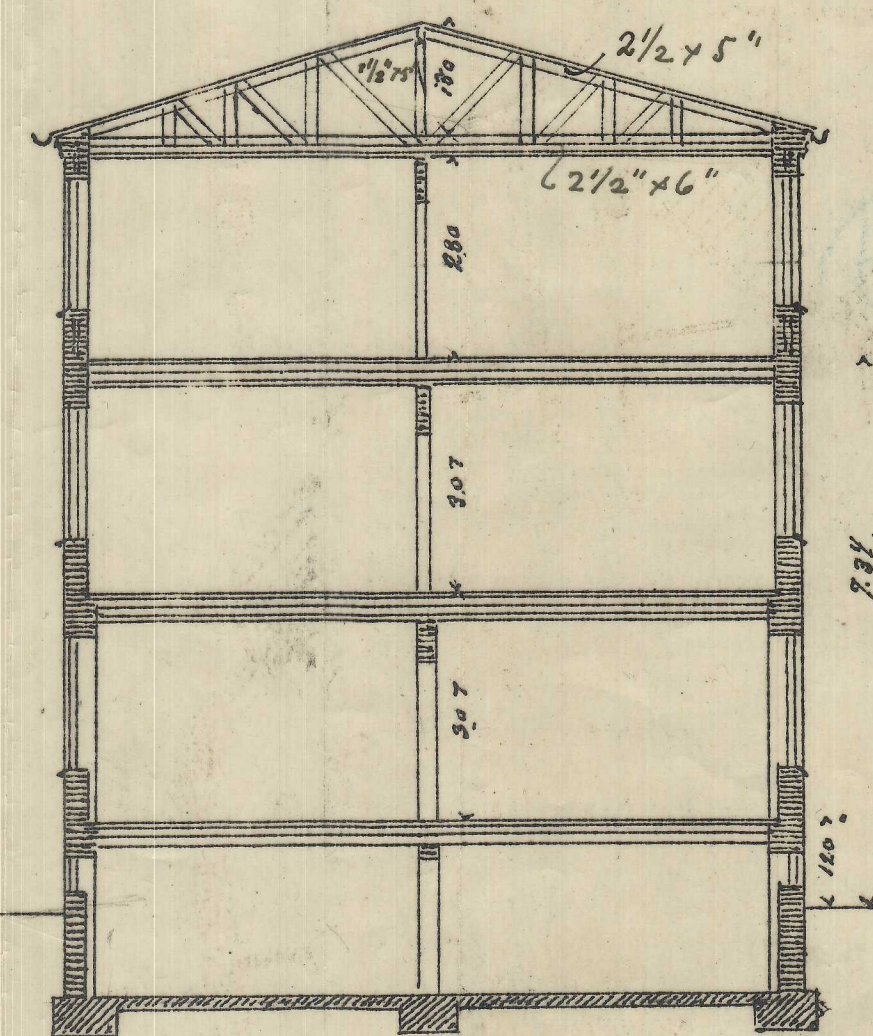
Gaardfacade (Skjulshøjs Allé)



Stueop af Hjørne.



Facade m. Florasalle.



Tidens navn Skovh 1892

L. J. Hansen
Architekt m. a. l. a.

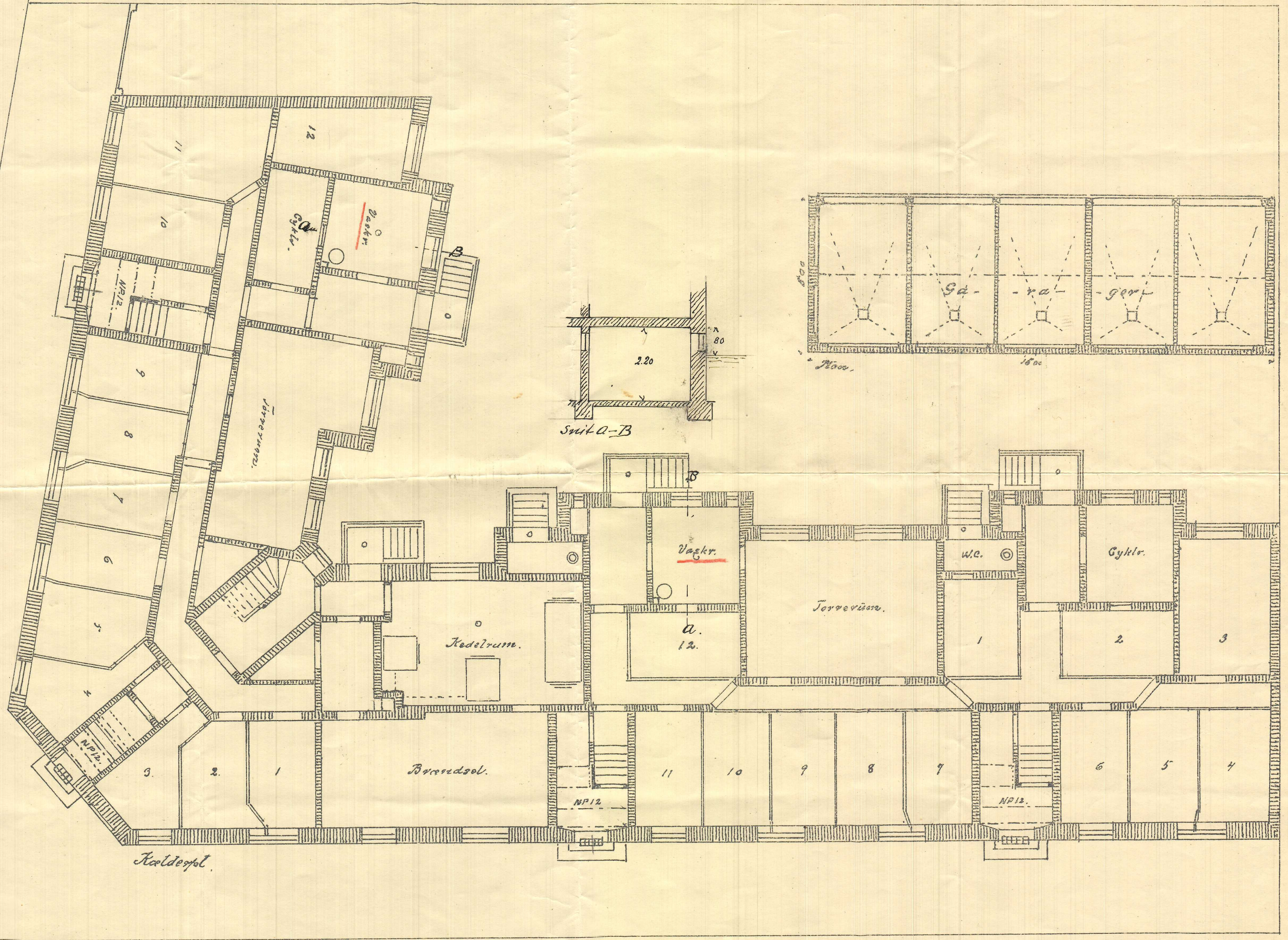
VEDRØRER SVAR
AF 15. DEC. 1932 FRA
BYGNINGSINSPEKTORAT

28. NOV. 1932
Sag Jr. VL 234 + 21. NOV. 1932
B & A P O

K

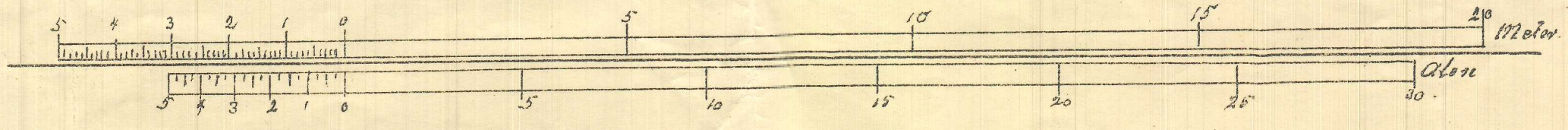
Matr. No 8650969. Vamlöse.

B.T.



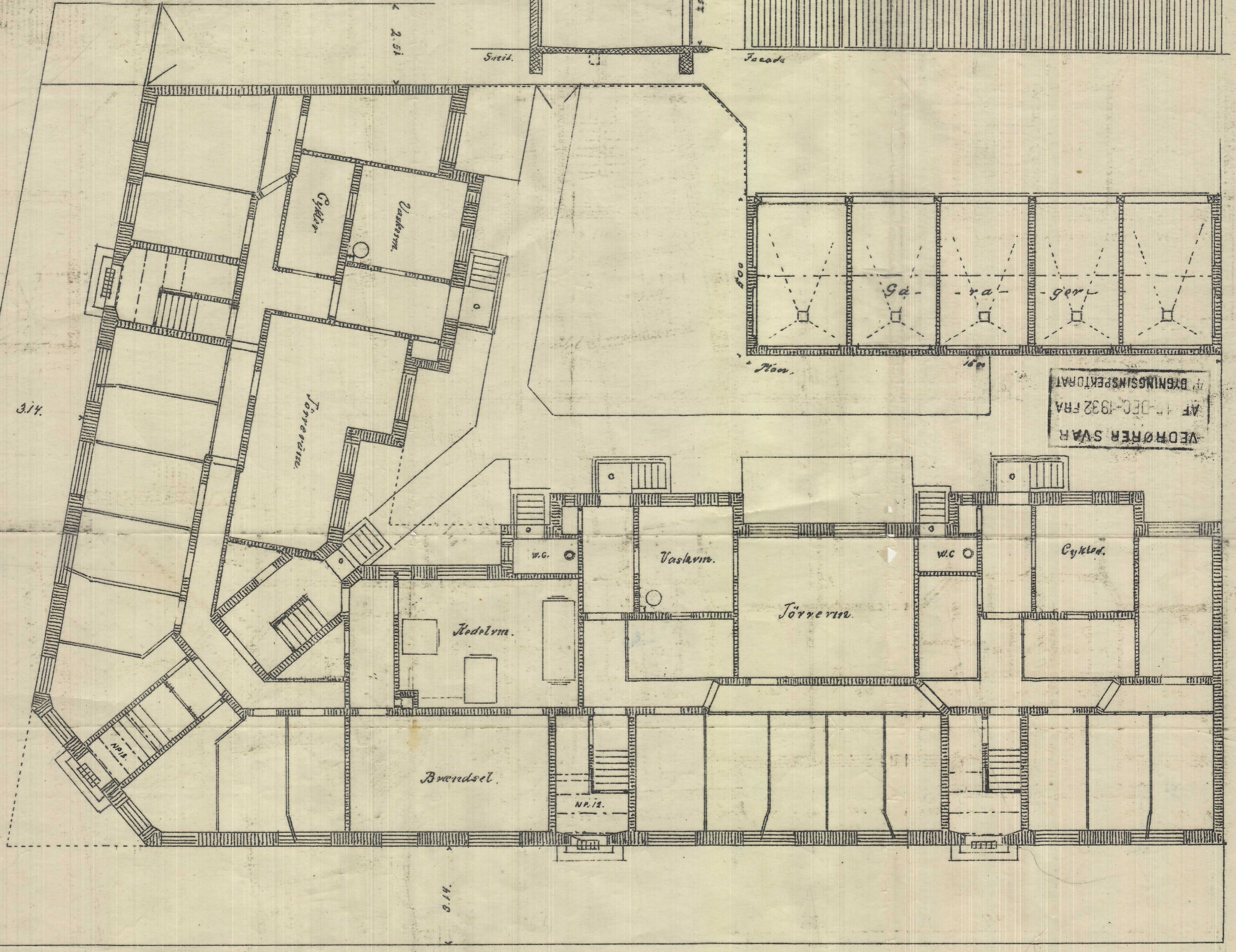
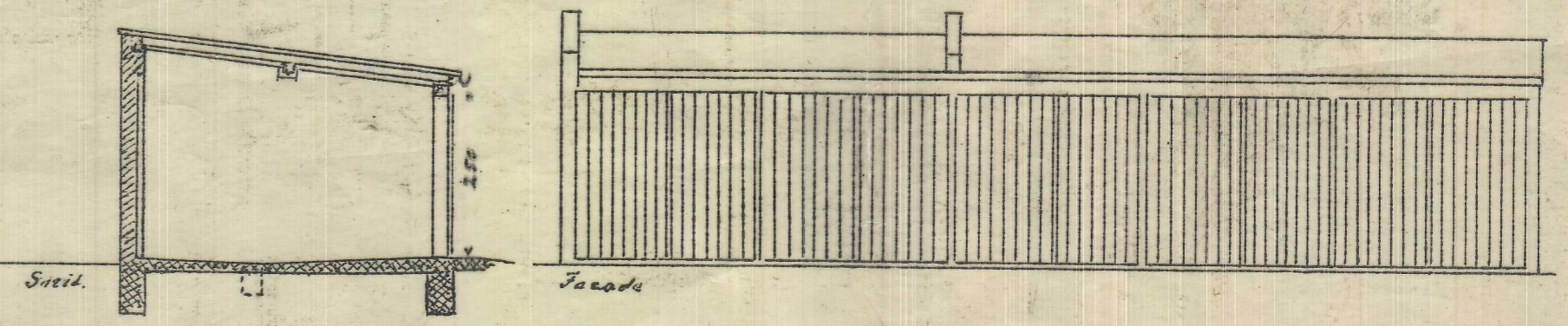
Stycke 1/10 av alla.

Florasalle

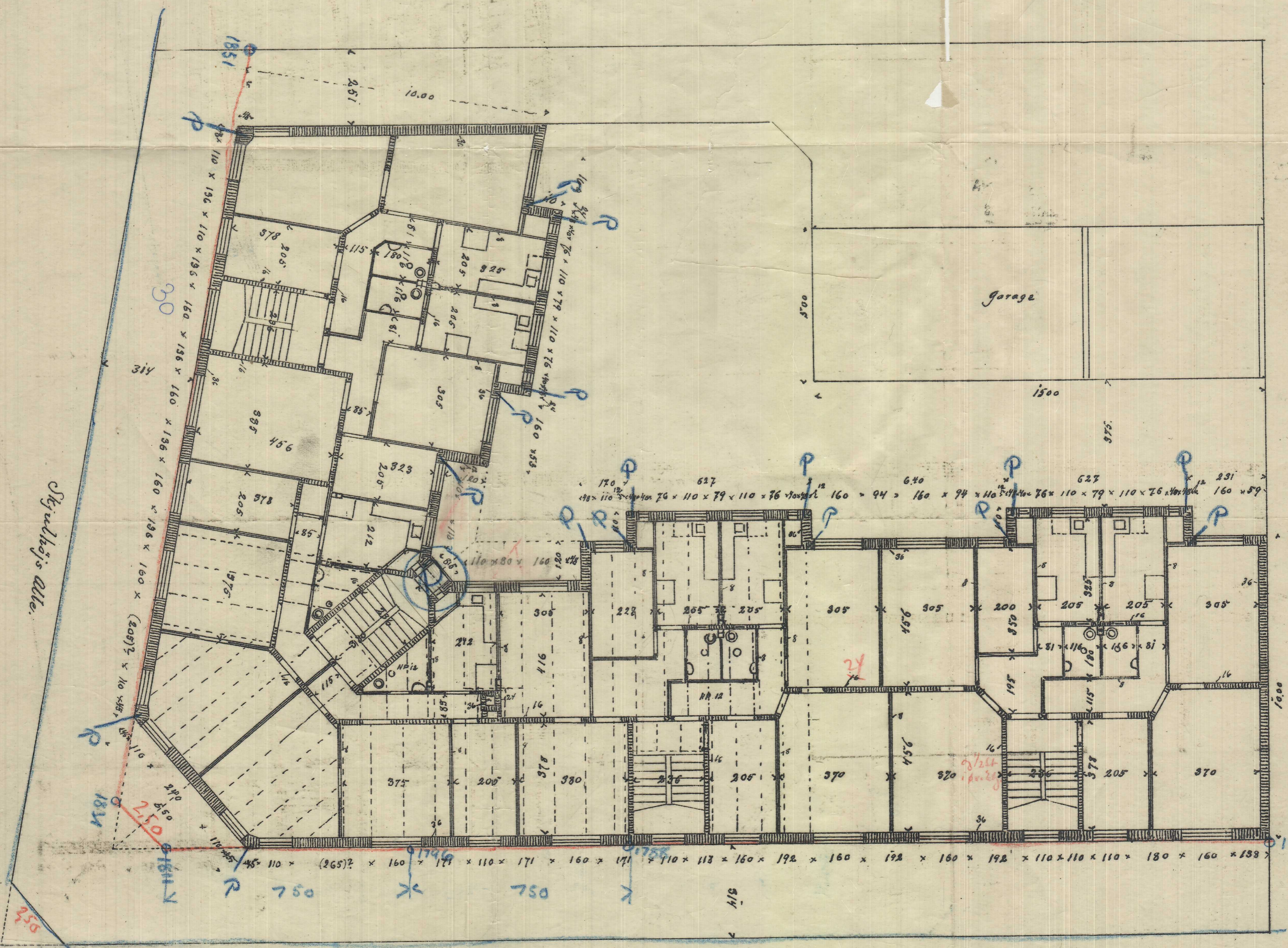


Johannesson, Jan. 1933.
L. J. Johannesson
 Arkitekt och M. o. A. o.

Matr. Nr. 840969. Vanløse.



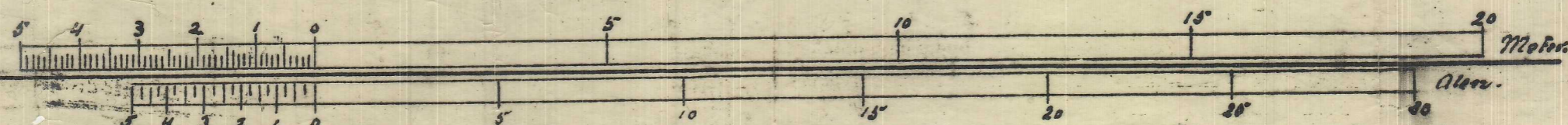
Holdderpl.



Skjoldhøjs allé.

Edagepl.

Florasalle



Løbenummer 1932

4 APR 1932

28. NOV. 1932

Baug VL 231-2 NOV 1932